

Little Chicken

BODY

START IN MAIN COLOUR

R1: 6SC IN MR (6)

R2: 6INC (12)

R3: (SC, INC) X6 (18)

R4-7: 18SC (4 ROUNDS) (18)

CHANGING COLOUR



PLACE SAFETY EYES BETWEEN ROUNDS 6 AND 7, 2 VISIBLE STITCHES APART AND STUFF YOUR CHICKEN.

FOLD IN HALF. FOR ROUND 8 WE WILL BE WORKING THROUGH BOTH SIDES OF THE BODY.

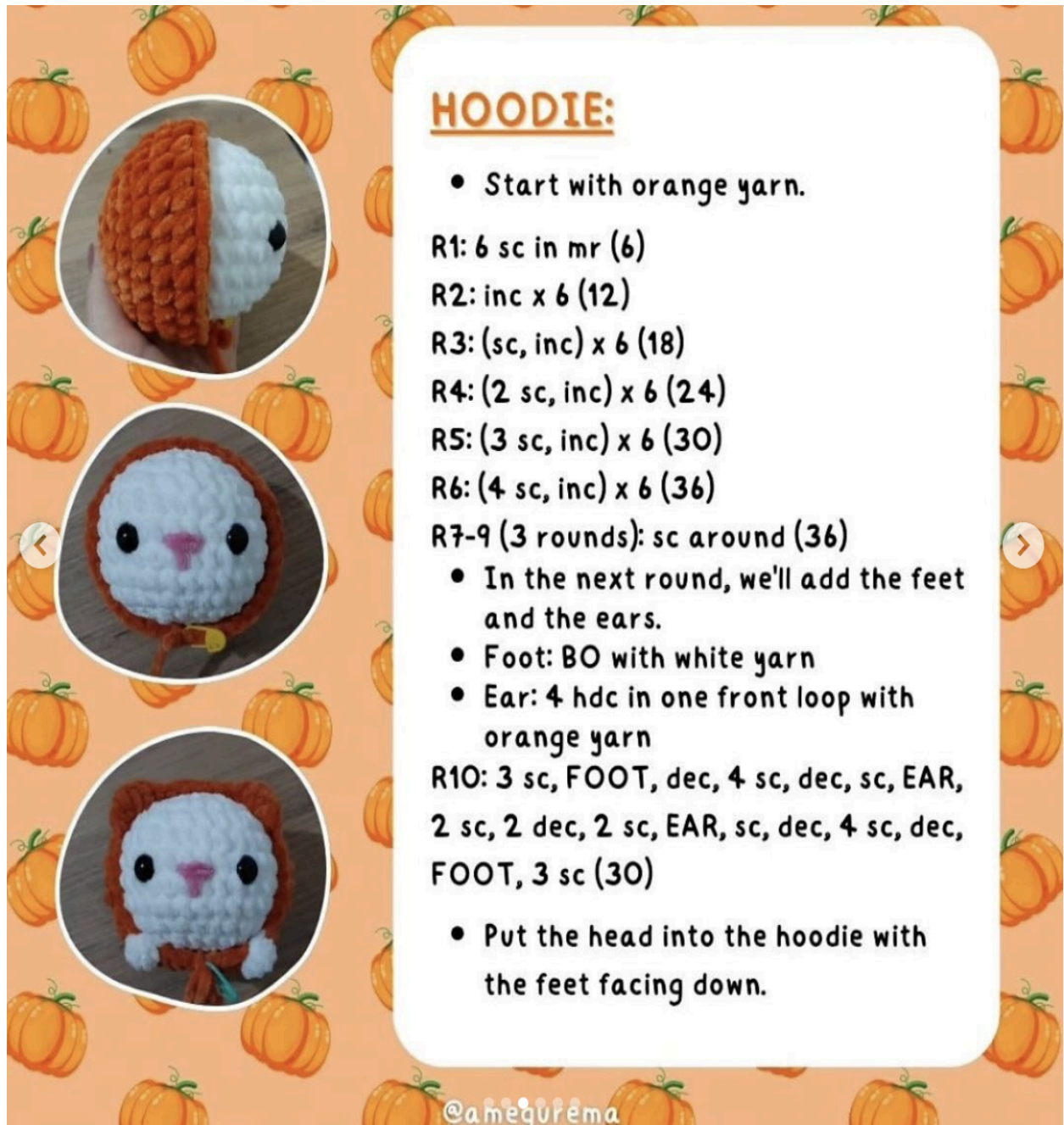
**R8: (WORKING IN BOTH SIDES) 6SLST, IN RED: CH1, 2DC, SLST
FO**

BRING ALL LOOSE ENDS TO ONE POINT AND MAKE A KNOT.

EMBROIDER THE BEAK BETWEEN THE EYES USING ORANGE YARN GOING OVER TWICE.

@MISIAKI.Z.INNEJ.PAKI

Pumpkin Cat



- In the next round don't forget to crochet into the back loop of the ears.

R11: (2 sc, dec) x 2, 5 sc, 2 dec, 5 sc, (dec, 2 sc) x 2 (24)

- S1st, fo. Hide the tail.

STEM: (brown yarn)

R1: 5 sc in mr (5)

R2-3 (2 rounds): sc around (5)

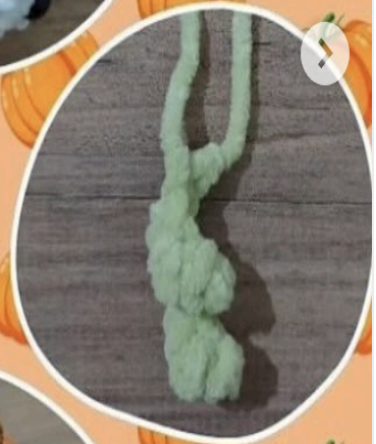
- S1st, fo. Leave a tail to sew.
- Sew it in the center, 2 rounds behind the ears.
- Do not stuff!

LEAF: (green yarn)

R1: ch 9 (9)

R2: skip 1 ch, inc x 8 (16)

- Ch 1, fo. Leave a tail to sew.
- Sew it to the side of the stem.



HEAD:

- Start with white yarn.

R1: 6 sc in mr (6)

R2: inc x 6 (12)

R3: (sc, inc) x 6 (18)

R4: (2 sc, inc) x 6 (24)

R5: (3 sc, inc) x 6 (30)

R6-9 (4 rounds): sc around (30)

- Insert safety eyes between R7-R8, 6 stitches apart.
- Embroider a T-shape nose between the eyes, 2 stitches wide.
- Start stuffing and continue as you go.

R10: (3 sc, dec) x 6 (24)

R11: (2 sc, dec) x 6 (18)

R12: (sc, dec) x 6 (12)

R13: dec x 6 (6)

- S1st, FO. Close the hole. Hide the tail.



Holiday Capybara

Holiday Capybara (by avarycrochets on Instagram)

CAPYBARA

Use dark brown yarn

R1: 8sc in MR (8)

R2: (1sc, [3sc]) x4 (16)

Color change to light brown

R3: (1sc, inc) x8 (24)

R4: 9sc, inc x6, 9sc (30)

R5-R6: 30sc (30) (2 rounds)

R7: 7sc, dec x8, 4sc, ccd bo, ccl inc, 1sc (23)

R8: inc, 1sc, ccd bo, ccl 6sc, inc, 2sc, inc, 10sc (26)

R9-R11: 26sc (26) (3 rounds)

You may need to adjust the bobble stitches in the next 2 rounds so the legs line up.

R12: 24sc, ccd bo, ccl 1sc (26)

R13: 3sc, ccd bo, ccl 4sc, dec x6, 6sc (20)

Start stuffing, continue as you go

R14: 6sc, dec x6, 2sc (14)

R15: dec x7 (7)

Fasten off, pull through remaining 7 loops, tie and hide ends.



CROCHET ON THE EARS

Pull up a loop of dark brown yarn at the top side of the head between R5-R6.

Ch 2, sc into 2nd chain from hook, slst into the same starting stitch.

Repeat on the other side of the head, approx. 8 stitches apart.



EMBROIDER THE EYES

Embroider the eyes on the sides of the face, across R4-R5.



Make sure you start and finish in the same stitch to tie and hide your tail ends.

EMBROIDER THE NOSE

Using black acrylic yarn



Insert sewing needle into the top right of the nose and across the top 3 stitches, insert it into the top right.

Before pulling tight, pull the needle through the center of the nose about 1 row below.

Wrap the yarn around the top thread and back through the same stitch. This will secure the shape of the nose as a "V".

Pull through the center about 1 row below and back through the base of the "V".

You could fasten off, or continue to embroider the eyes.



SANTA HAT

Using red yarn

R1: 6sc in MR (6)

R2: 6sc (6)

R3: (sc, inc) x3 (9)

R4-R5: 9sc (9) (2 rounds)

Color change to white

R5 FLO: 9sc (9)

slst into starting stitch

Fasten off leaving a long tail. Do not stuff.



Using white yarn, attach

a bobble stitch to the top of the hat, through R1

(through the MR).

Fasten off, tie and hide ends.



Sew onto the top of the head, between the ears.



Mini Tulip

Mini Tulip (by monua.stuff on Instagram)

Petal

R1 : 6sc in MR [6]

R2 : inc x 6 [12]

R3 : (sc, inc) x 6 [18]

R4 : (sc, inc, sc) x 6 [24]

R5 : (3sc, inc) x 6 [30]

R6-13 : sc all the way around [30]

Fasten off and leave a long tail for sewing.

Stuff the petal lightly to form tulip shape.

Fold the tulip in half then insert the needle into both middle part and sew together. Fold the opposite side, insert the needle into both middle part and sew together

(you can watch my tutorial on YouTube for a better understand)

@monua.stuff

Stem

R1: 8sc in MR [8]

R2-9 : sc all the way around [8]

Fasten off and leave a long tail then sew to the petal.

Leaf

R1: 6sc in MR [6]

R2: (1sc, inc) x 3 [9]

R3: (sc, inc, sc) x 3 [12]

R4: (sc, dec, sc) x 3 [9]

R5: (sc, dec) x 3 [6]

Fasten off and leave a long tail for sewing.

Fold the leaf and sew both side together then sew it on the stem from round 6-8

@monua.stuff

Pocket Frog

Pocket Frog (by lecromi on Instagram)

frog

R1: 6 SC in MR [6]

R2: 6 INC [12]

**R3: INC, SC, INC, BO, (INC, SC) × 2 INC, BO,
INC, SC, INC [18]**

R4-6: SC around (3 rounds) [18]

place the eyes inside the bobble stitches

**R7: 6 SC, BO, 2 SC, BO, SC, BO, 2 SC, BO, 3 SC
[18]**

R8: (SC, DEC) × 6 [12]

start stuffing

R9: 6 DEC [6]

Fasten off and sew the hole close

add a mouth between the eyes and blush

Eggy Chick

Eggy Chick (by therapyonmyhook on Instagram)

Chick:

R1: 7 sc in mr (7)

R2: inc x 7 (14)

R3: (sc, inc) x 7 (21)

R4: (2 sc, inc) x 7 (28)

R5-R8 (4 rounds): sc around (28)

R9: 5 sc, wing*, 9 sc, wing*, 14 sc (28)

R10+R11 (2 rounds): sc around (28)

R12: 4 sc, B06, 10 sc, B06, 12 sc (28)

Add safety eyes between R7 and R8, 4 stitches apart.

R13: (2 sc, dec) x 7 (21)

R14: (sc, dec) x 7 (14)

Stuff the chick.

R15: dec x 7 (7)

Cut the yarn, FO and close the hole.

Embroider a beak between the eyes.

*Wing:

Chain 3, work a sc in the 2nd chain from hook and work a hdc in the next chain.



Fried egg:

In white:

R1: 6 sc in mr (6)

R2: inc x 6 (12)

R3: (sc, inc) x 6 (18)

R4: inc, hdc, 2x dc inc, sl st, inc, dc inc, hdc, sl st
sc, inc, hdc, 2x dc inc, sl st, 2x hdc, sc (26)

Work a sl st into the first stitch.

Leave a long tail for sewing.

Cut the yarn, FO and close the hole.

Sew onto the head of your chick.



In yellow:

R1: 6 sc in mr (6)

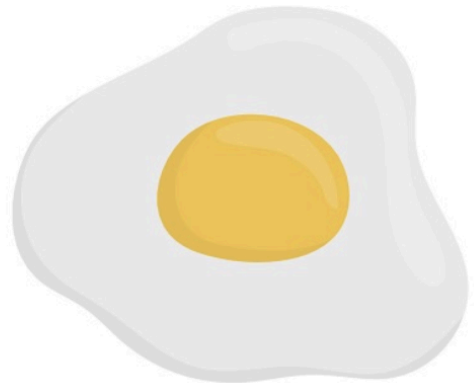
R2: inc x 6 (12)

Work a sl st into the first stitch.

Leave a long tail for sewing.

Cut the yarn, FO and close the hole.

Sew onto the middle of the white part.



Pusheen the Cat

Ears (make two)

Ears

- R1: 4sc in MR {4}
- R2: (1sc, inc) x2 {6}
- R3: (2sc, inc) x2 {8}
- R4: sc around {8}



Cut yarn & FO, repeat R1-4 to make the second ear

Tail

- R1: 5sc in MR {5}
- R2-9: sc around (8 rows) {5}



Depending on the yarn you use, you may need to stuff the tail. I did not stuff it

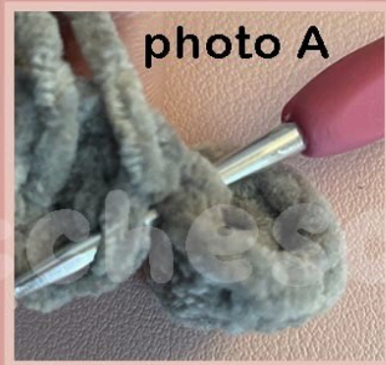
Close the tail with 2sc, leave a tail for sewing, or hide tails if using glue

Sew 3 black stripes onto the outer part of tail

Set aside for later, continue to next page

Head/Body

- R1: 8sc in MR {8}
- R2: Insert your hook from the inside of the first ear, and then into the first stitch of the MR. (photo A) Pull your yarn through both the MR & the ear, make a sc. Repeat one more time in the next stitch. 2sc, connect the second ear in the next 2 stitches the same way you connected the first, 2sc {8}



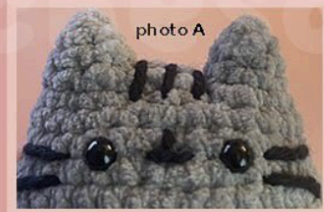
NOTE ignore the stitches we used to connect the ears, we will only be working in the unworked stitches

- R3: (inc x6 around the first ear, 2sc in the MR) x2 {28} (photo B)
- R4: (13sc, inc) x2 {30}
- R5: sc around {30}
- R6: (4sc, inc) x6 {36}
- R7-9: sc around (3 rows) {36}
- R10: (5sc, inc) x6 {42}
- R11-13: sc around (3 rows) {42}
- R14: (5sc, dec) x6 {36}



Head/Body continued...

-Place eyes onto rows 4-5, about 6 stitches apart (photo A)

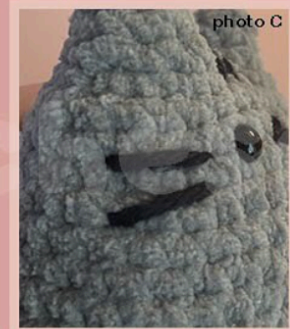


-Sew an upsidedown T for the mouth between the eyes (photo A)

-Sew whiskers in black or dark gray yarn onto rows 5 & 6 (photo C)



-Sew 3 lines in black or dark gray between the ears (photo D)



-Use felt cutouts or sew two black lines on pusheens back (photo E)

-Stuff ears & body, be sure not to overstuff the bottom so pusheen can sit flat

NOTE, you may need to adjust the placement of your bbl depending on your yarn tension, your bbl should be lined up with the face (photo B)

•R15: 18sc, bbl, 2sc, bbl, 14sc {36}

•R16: (4sc, dec) x6 {30}

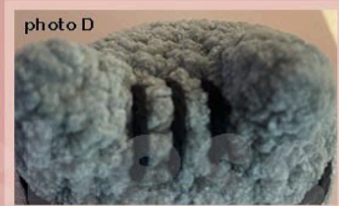
•R17: (3sc, dec) x6 {24}

•R18: (1sc, dec) x8 {16}

•R19: dec x8 {8}

Finish stuffing

FO & sew hole closed



Bee

Bee (by ackyplushies on Instagram)

@ACKYPLUSHIES

Body

R1 - 6 SC IN A MAGIC RING [6]

R2 - INC X6 [12]

R3 - (SC, INC) X6 [18]

R4 - (2 SC, INC) X6 [24]

R5-8 - SC ALL AROUND [24]

BEGIN STUFFING.

R17 - (2 SC, DEC) X6 [18]

R18 - (SC, DEC) X6 [12]

R19 - DEC X6 [6]

PLACE SAFETY EYES BETWEEN ROWS 4 AND 5, DIRECTLY OPPOSITE EACH OTHER FROM THE CENTRE OF THE FACE.

FO AND LEAVE A TAIL FOR SEWING.
FINISH STUFFING AND CLOSE OFF.

COLOUR CHANGES OCCUR IN THE LAST ST OF THE PREVIOUS ROUND.

EMBROIDER PINK CHEEKS IF YOU WISH!

R9-10 - {IN BLACK} SC ALL AROUND [24]

R11-12 - {IN YELLOW} SC ALL AROUND [24]

R13-14 - {IN BLACK} SC ALL AROUND [24]

R15-16 - {IN YELLOW} SC ALL AROUND [24]



Wings

(MAKE 2 IN WHITE)

R1 - 6 SC IN A MAGIC RING [6]

R2 - INC X6 [12]

R3 - SC ALL AROUND [12]

.FO AND LEAVE A LONG TAIL FOR SEWING.

TURN THE BEE SO THAT THE COLOUR
CHANGES ARE UNDERNEATH.

SEW THE WINGS ON THE TOP OF THE BEE
BETWEEN ROUNDS 11 AND 12, STANDING
UP. YOU CAN ALSO CHOOSE TO SEW THEM
LAYING FLAT ACROSS THE BODY.



Mini Cat Loaf

Body

R1: 6sc in mr (6)

R2: 6inc (12)

R3: (1sc, 1inc) x6 (18)

R4: (2sc, 1 inc) x6 (24)

R5: (3sc, 1inc) x6 (30)

R6 to R12 [7 rounds]: 30sc (30)

R13: (3sc, 1dec) x6 (24)

R14: (2sc, 1dec) x6 (18)

Start stuffing.

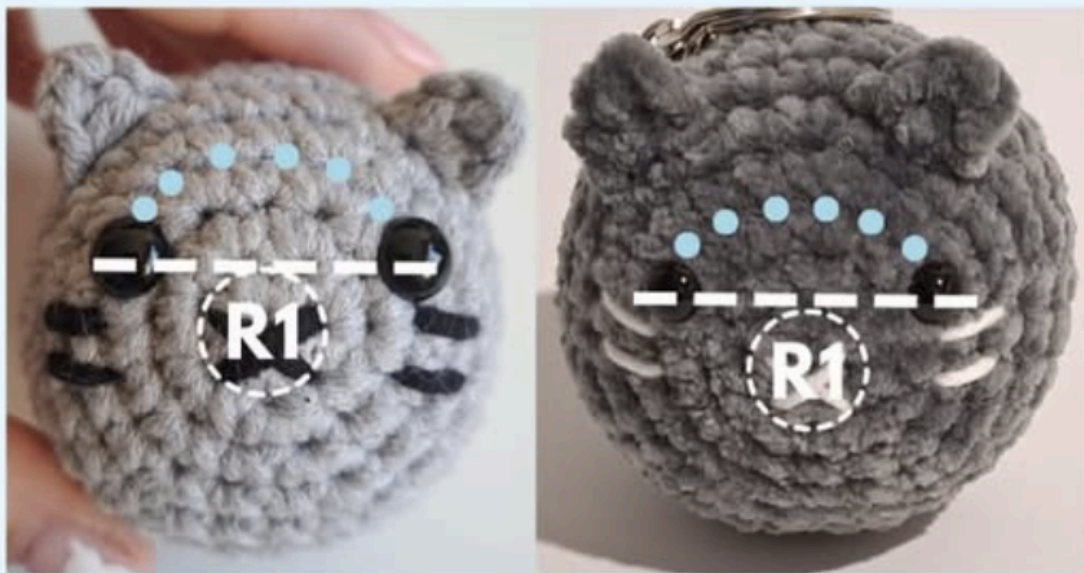
R15: (1sc, 1dec) x6 (12)

Finish stuffing.

R16: 6dec (6).

Eyes between R3 and R4,
6 to 7 stitches apart.

I try to imagine a parellel line to the first round!



Ears

Choose a stitch more less 45 degrees diagonal to the eye, between R5 and R6. Insert the hook horizontally, pull the yarn through and ch3. In the 2nd ch from the hook sc, then hdc in the last ch. Sp st horizontally back onto the body. I just try to see how spread I want my ear to be. Fasten off.



Face

Sew on the X nose and the whiskers.

Tail

If chenille yarn:

R1: 6sc in mr (6)

R2 to R6 (5 rounds): 6sc (6)

If cotton/mix yarn:

R1: 8sc in mr (8)

R2 to R6 (5 rounds): 8sc (8)



Stuff a little and sew on top of R13 and R14. I usually stab a needle to mark the center and where the top of the tail will be sewed.

